



Edvard Munch, the modern eye



From 21/09/2011 to 09/01/2012
Centre Pompidou

With a large mix of unknown works of art, The Pompidou Centre gives an original slant to the work of this Norwegian artist.

Edvard Munch, a curious and experimental artist, was well established in his time. The idea that the painter was a self centered, tormented soul living on the margins of society seems surprising. This exhibition at Beaubourg sweeps away this preconception, concentrating on the appeal of the creator of the famous Scream and of his most modern representations.

Discover his experiments with photography, film and the influence of a theatre revival on his paintings. His work certainly integrated the new way of looking at movement carried by the illustrated press or the cinema in the energy of their images.

This passionate journey consists of 400 works, among which you will find 59 canvasses, 49 photographs of his time, films, around 30 studies on paper and one of the rare sculptures done by this indubitably open minded artist.

Address: Centre Pompidou, place Georges-Pompidou, 75004 Paris |

Contact: www.centrepompidou.fr | 01 44 78 12 33 |

Access: Bus: 21, 29, 38, 47, 58, 69, 70, 72, 74, 75, 76, 81, 85, 96 |

Metro: Line 1, 4 and 14 - Châtelet ; Line 1 and 11 - Hôtel de Ville ; Line 11 - Rambuteau |

Open every day from 11 to 21:00, except Tuesdays. Price: from 10 to 11.50 €; reduced price (for the 12/25 years old, and for disabled persons): from 8 to 9.50 €. Free for under 18s

Disney Magical Moments Festival



Until 05 April 2012
Disneyland® Paris

Enjoy a larger than life experience with legendary cartoon characters.

Which child (or grownup child) has not dreamed of one day visiting the wonderful world of Disney? This season at Disneyland® Paris with its brand-new themes will finally give you the chance to make a dream come true. Visitors can become the real heroes in the adventures of The Lion King, Toy Story and Ratatouille. There are no less than 14 shows where you can immerse yourself in the world of the Disney princesses, Mickey's magician's workshop, Peter Pan and Tinkerbell's sky, the world of Alice and the Mad Hatter, Baloo's jungle and Aladdin's enchanting Orient.



You'll be thrilled by the spectacular car stunt display with Flash McQueen, the hero of Cars 2, the new film by Disney/Pixar. You can physically enter the giant book of Rapunzel, the new long-haired heroine in a hilarious photo session. On the Disney Dance Express train, you can party to your heart's delight with Dingo, Donald, Minnie and Buzz Lightyear to the rhythms of Broadway. As for Monsters & Co., they will scare the living daylight out of you!

Address: Disneyland® Paris, Marne-la-Vallée, 77777 Chessy |

Contact: www.disneylandparis.fr |

Access: RER A - Marne-la-Vallée - Chessy |

Open every day, from 10:00 to 19:00. Price for a day: 51 € for kids / 57 € for adults



A network of Tourist Information centres at your service

PARIS-CHARLES DE GAULLE AIRPORT

- Terminal T1, Arrivals level, gate 4 - 7:15-22:00
- Terminal 2C, Arrivals / Departures level, opposite gate 5 - 7:30-14:30
- Terminal 2D, Arrivals / Departures level, gate 7 - 7:30-21:30
- Terminal 2E, Arrivals level, gate 2 - 7:15-22:00
- Terminal 2F, Arrivals level, gate 11 - 7:15 -22:00

PARIS-ORLY AIRPORT

- Terminal Orly Sud, Gate L - 7:15-21:45
- Terminal Ouest Arrivals level, gate A - 7:15 > 21:45

VERSAILLES

- 2bis, avenue de Paris
- April to September, 9:00-19:00 (Mon, 10:00-18:00)
- October to March, 9:00-18:00 (Sun, 9:20-17:00, Mon, 11:00-17:00)

DISNEYLAND PARIS

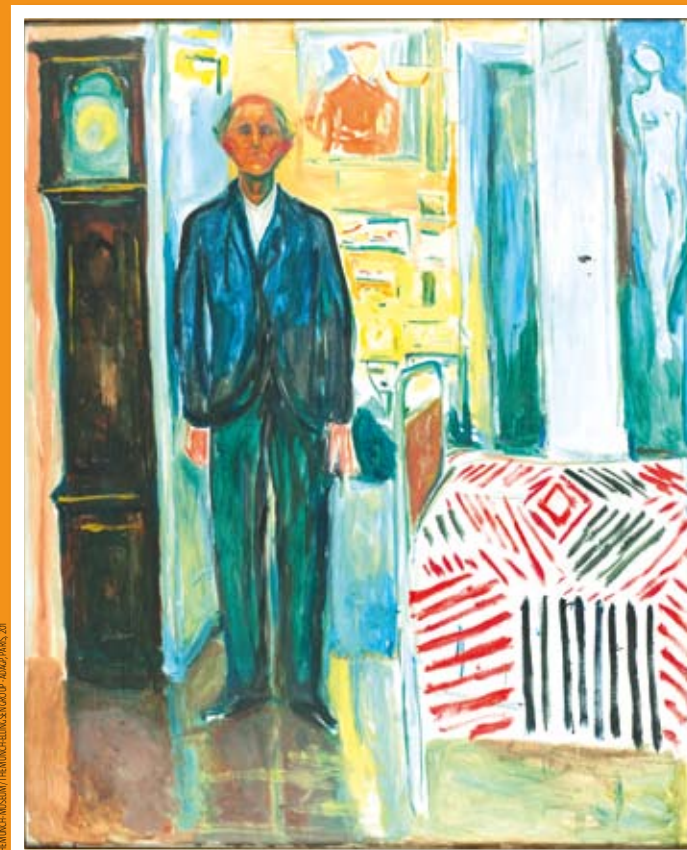
- Disney Village - Opposite the entrance - 9:00-20:45

SO PARIS

5 MUST SEE EVENTS
IN AND AROUND PARIS

September-October 2011

le nouveau
Paris!
Île-de-France



© THE MUNCH FOUNDATION / THE MUNCH FOUNDATION / PARIS, 2011

Edvard Munch, the modern eye

Jazz à La Villette



From 31/08 to 11/09/2011
Cité de la musique

Jazz mixed with pop, electro or hip hop can only mean one thing: Jazz à La Villette!

From 31 August to 11 September, various places at La Villette pay tribute to jazz. Venues such as la Cité de la musique, le Cabaret Sauvage and la Grande Halle promote the fusion of jazz with pop, electro, free or hip hop. With each edition of the festival, these mixes and fusions bring about

some highly original encounters and creations, effectively raising the buzz factor! Once again this year features an exciting line-up, with Hindi Zahra and Tigran Hamasyan, Archie Shepp, Roy Hargrove "RH Factor", Brad Mehldau, Rodolphe Burger & James Blood Ulmer, Medeski, Martin & Wood, Macco Parker, Fred Wesley and Pee Wee Ellis.



Address: Cité de la musique, 221 avenue Jean-Jaurès, 75019 Paris |
Contact: www.citedelamusique.fr | 01 44 84 44 84 |
Access: Bus: 75, 151, PC2, PC3 | Metro: Line 5 - Porte-de-Pantin |
Times depending on the show. Price: from 6 € to 30 €

The September-October 2011 edition of this booklet is published by the Comité Régional du Tourisme Paris Île-de-France (CRT)
Publishing Director: Gérard Feldzer, President of the CRT
Coordination: Director of Communication, CRT Paris Île-de-France, 11 rue du Faubourg-Poissonnière, 75009 Paris.
Production: Com-Press, 6 rue Tarnac, 47220 Astaffort, France. Chief Executive: Marie de La Forest. Art Director: Jérémy Hiro. Photo Engraver: Alain Adone/Com-Press.
Print: Comelli, avenue des Deux-Lacs, ZA Courtabœuf 7, 91140 Villejust.



Matisse, Cézanne, Picasso... The Stein Family



From 05/10/2011 to 16/01/2012
Grand Palais, Galeries nationales

The fabulous history of a family of collectors, founders of one of the most comprehensive collections of modern art at the start of the 20th Century.

They were the first buyers of Picasso and Matisse. The Stein family: first the American siblings Gertrude and Leo take up residence in Paris in 1903. They are soon joined by their eldest brother Michael. They all nurture a passion for the avant-garde artists with many of whom they create strong personal links. Mainly Renoir, Cézanne, Picasso and Matisse but also Bonnard, Valotton, Laurencin, Gris, Masson, Picabia... Each assembles a collection which would make

those of the amateur pale into insignificance. Works for which they organize shows in their own homes, that they make available for exhibitions which they passionately support. The Steins quickly become a force to be reckoned with in the Parisian art world. Gertrude, for example, is among the key figures responsible for the spread of cubism. Through an ensemble of exceptional works, this exhibition at the Galeries nationales du Grand Palais gives homage to this family of unusual patrons. An unprecedented glimpse into the Stein's patronage of artists and the fundamental role they would play in the legitimizing of modern art.

Address: Grand Palais, 3 avenue du Général-Eisenhower, 75008 Paris |
Contact: www.rmn.fr | 01 44 13 17 17 |
Access: Bus: 28, 32, 42, 72, 73, 80, 83, 93 | Metro: Line 1, 9, 13 - Franklin-D.-Roosevelt or Champs-Élysées-Clemenceau | RER C: Invalides |
Open from Friday to Monday: 9:00 to 22:00, Tuesday: 9:00 to 14:00, Wednesday: 10:00 to 22:00, Thursday: 10:00 to 20:00. Price: from 8 to 12 €. Free for under 13s

Photoquai 2011



From 13/09 to 11/11/2011
Musée du quai Branly

You may not know them yet, but they certainly don't lack talent! Discover the artistic images of these non-Western photographers. Photoquai invites you to discover the unknown or little known works of around fifty non-Western photographers. Created in 2007 by the Musée du quai Branly, this grand international encounter brought together

430,000 visitors on the museum's quay during its last show in 2009. Photoquai continues in 2011 with its mission to promote photographers whose work is only known to a limited audience in Europe and to generate exchange and a meeting of minds around the world. Don't miss this admission-free discovery of talented photographers from elsewhere!

Address: Musée du quai Branly, 37 quai Branly, entrée Debilly, 75007 Paris |
Contact: www.quaibrany.fr | 01 56 61 70 00 |
Access: Bus: 42, 63, 80, 92, 72 | Metro: Line 6 - Bir-Hakeim ; Line 8 - École-Militaire ; Line 9 - Iéna or Alma-Marceau | RER C - Pont-de-l'Alma |
Free access 24 hours a day, 7 days a week



© A. SCHNECK/MUSÉE DU QUAI BRANLY

More informations and events on:
www.new-paris-idf.com



BECOME A FAN ON FACEBOOK
<http://facebook.nouveau-paris-idf.com>



FOLLOW US ON TWITTER
<http://twitter.new-paris-idf.com>

